

SOLUTIONS

E-Mobility & Battery



Portable Charging Station

Battery Pack

EV Charging

Safe Charging + Hybrid Connection

Components of battery-related applications are crucial factors that influence the stable operation of the battery. The connectors, a vital component, are used to attach batteries in a formation rectifier circuit. A poor connection may cause high resistance, electrical circuit short circuits, high heat conditions, and even explosions. Thus, **choosing a high-quality and solid connector is very important.**

Our connectors are designed to withstand a wide temperature range from -40°C to 85°C and offer up to IP68 protection, ensuring resistance to humidity, water, and dust. The bayonet coupling design provides excellent anti-vibration functionality. In addition to standard high-power connectors, WEIPU has also developed **hybrid circular waterproof connectors** and offers comprehensive **cable assembly services**.



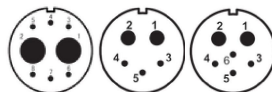
Up to IP68 Protection

Ensures reliable performance in the harshest environments, safeguarding against dust, water, and humidity.



Hybrid Connection

The most popular 8-pin connector (2*60A+6*5A) can bring power and signal to applications and is perfectly suited for EV battery projects.



Heavy Duty Connectors

Flexible Combination Solution

We offer versatile and flexible connector solutions, such as heavy-duty and cable assembly services, tailored to meet diverse application requirements.

Connectors ensure safe power transmission from the battery's energy output.

Applications:

- Electric Vehicle
- Electrical Industrial Vehicle (EIV)
- Automated Guided Vehicle
- E-Scooter
- E-Bus
- Electric Cargo Bike
- Hybrid Electric Vehicle
- Battery Management System
- Battery Charger
- Lithium-ion Battery Pack



BATTERY
ENERGY
STORAGE



Anti-vibration 

WY Series

Bayonet with up to IP67
1- to 61-pin
up to 500 V/150 A
size 16-to-55 mm



Easy plugging 

SF Series

Push-pull with IP67
1- to 15-pin
up to 500V/100 A
size 6-to-20 mm




Lightweight 

ST12 Series

Thread with IP67
2- to 9-pin
up to 250V/13 A
size 12 mm



IP68 Protection 

WK20 Series

Push-lock with IP68
1- to 15-pin
up to 500 V/30 A
size 20 mm

SOLUTIONS RENEWABLE ENERGY.

Solar energy has become popular as global demand for clean and safe renewable energy grows. However, **ensuring the reliable and secure operation of solar energy applications has become a priority**, given the harsh operating environment. One key component that plays a crucial role in the longevity of solar energy systems is the connectors used in the system.

Unreliable connectors can cause damage to solar energy systems, such as increased contact resistance, fretting wear, irreversible deformations of the shell, arcing damage, and even blowout, all of which bring irreparable disasters and losses for the systems. Moreover, as solar energy systems often operate outdoors, the connectors are exposed to extreme temperatures, humidity, vibration, atmospheric pollution, and UV radiation. Therefore, connectors need to have the ability of **temperature, vibration, UV resistance, and high IP standards** to ensure the safe and reliable operation of solar energy systems.



IP68 to withstand harsh environments

We provide a wide variety of connector types, including data (USB, RJ45, LC, and HDMI), power, and signal connections.



Strong-locking mechanism

The push-pull connectors provide a simple, fast, and strong-locking connection. The IP67 protection enables robot systems to work stably even in harsh conditions.



Outdoor UV testing

WEIPU offers high-performance data and hybrid connectors with various sizes, providing flexible options for the automation sector.

Applications:

- **Robotic arms**
- **Vision & Inspection system**
- **Unmanned system**
- **The Internet of Robotic Things (IoRT)**
- **Solar energy cleaner**
- **Robot controller**
- **Manufacturing process control**



SP Series-Black

The SP series - all black connectors offer **anti-UV, fade resistance**, and **IP68** protection, making them an excellent choice for renewable energy applications that often require robust, outdoor-ready solutions.

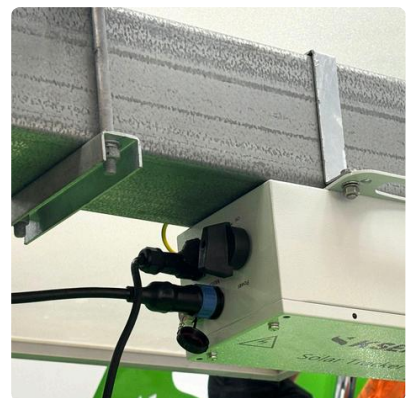
SF Series

The SF series, with **IP67** protection and **push-pull coupling**, enables **easy use and quick connections**, making them a reliable option for renewable energy applications, which often require robust outdoor performance.



Motor & Linear actuator Solution

- IP68 sealing protection
- High current carrying capacity
- Anti-UV capability
- Durability & Safety



Controller Box Solution

- Withstand harsh environments
- Easy to connect & disconnect
- Optimal performance & longevity



Sensor Solution

- High sealing protection
 - Easy-to-use connection mechanism
- Reliable and stable transmission even in harsh environments