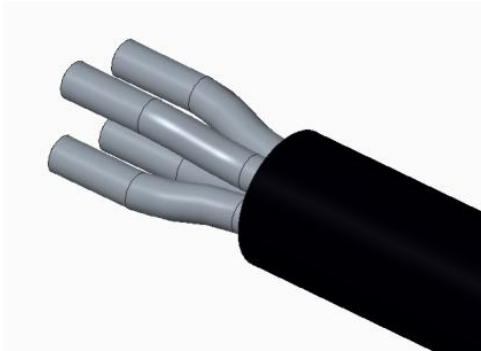
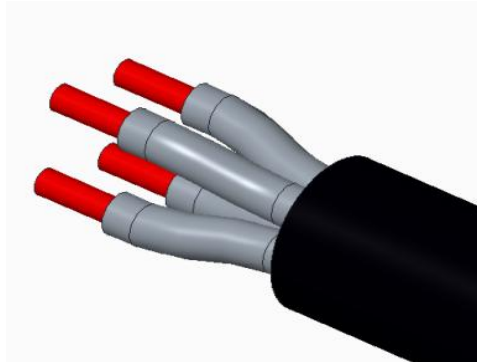


SP17_SP21 Cable Connector New H-Screw-9 Assembling Instruction



1. Strip the cable with length of 12-15mm.



2. Strip the wire with length of 5-7mm.



3. Put the stripped cable through the compression nut and backshell.

Note:

1) Wire size range is 0.75mm² ~ 2mm²/18 ~ 12AWG

2) Cable OD range:

SP17 - 6~10mm

SP21 - I: 4.5-7mm, II: 7-12mm, III: 5-9mm



4. Tighten the contact screw using an Allen key.

Allen key spec:

SP17 - 1.3mm ; SP21 - 1.5mm

Screw Torque:

SP17 - 0.1N.m ~ 0.3N.m;
SP21 - 0.2N.m ~ 0.4N.m



5. Tighten the backshell and plug main part with a wrench or other tools.

Torque:

SP17 - 0.7N.m ~ 1.0N.m
SP21 - 1.0N.m ~ 1.1N.m

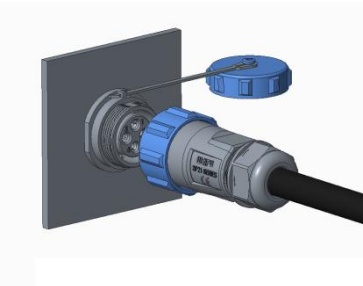


6. Tighten the compression nut and backshell with a wrench or other tools.

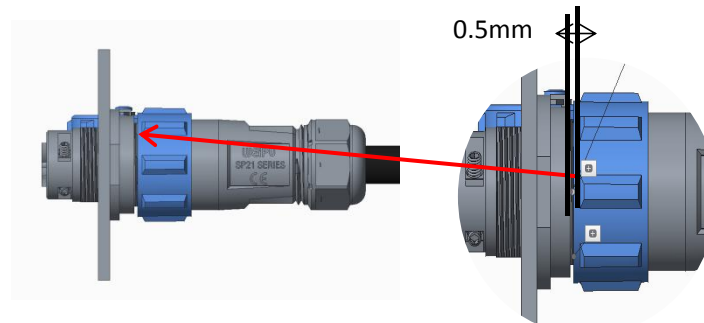
Torque:

SP17 - 0.8N.m ~ 1.2N.m
SP21 - 1.0N.m ~ 1.2N.m

***Reminder:** When assembling the screws, it's recommended to loosen and tighten one by one to avoid losing the screws.



7. Align with the white dot on connectors, then locking the plug and socket with torque of 0.8-1.2N.m



Note: The distance between socket and plug locking nut should be $\leq 0.5\text{mm}$.



Remark: The assembling processes for SP1710/SP2110 & SP1711/SP2111 are the same!