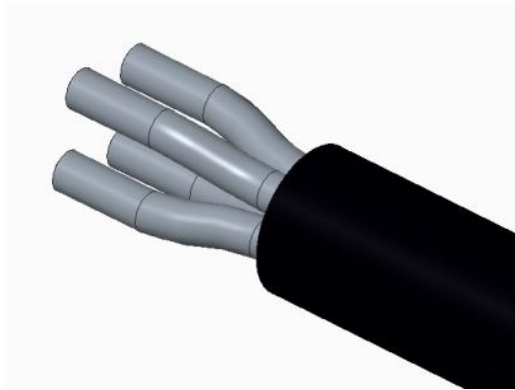
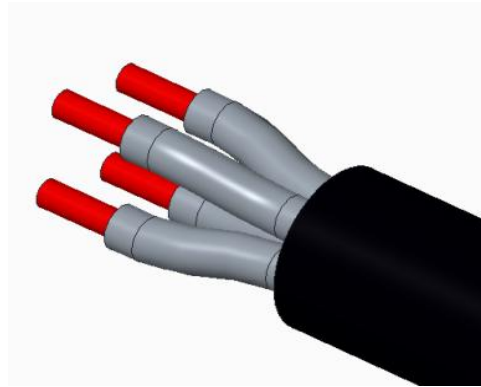


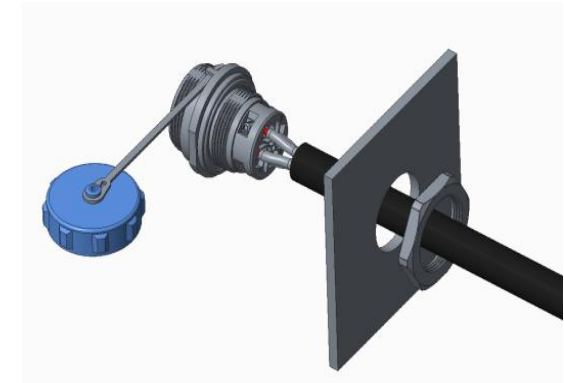
SP1712 SP2112 Rear-nut Socket New H-Screw-9 Assembling Instruction



1. Strip the cable to a length of 12-15mm.



2. Strip the wire to a length of 5-7mm.



3. Put the cable through the rear-nut and panel.

Note:

- 1) Wire size range is $0.75\text{mm}^2 \sim 2\text{mm}^2 / 18 \sim 12\text{AWG}$
- 2) Panel thickness: 3mm max



4. Tighten the contact screw via Allen key.

Allen key spec:

SP17 - 1.3mm ; SP21 - 1.5mm

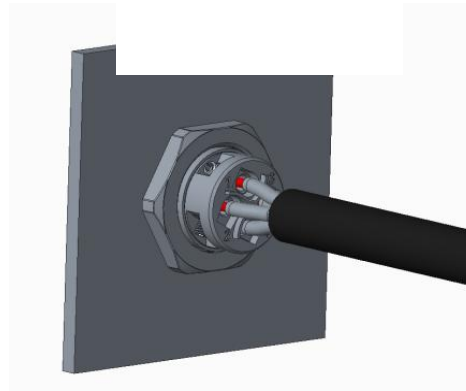
Screw Torque:

SP17 - 0.1N.m~0.3N.m

SP21 - 0.2N.m~0.4N.m

Reminder:

When assembling the screws, it is recommended to loosen and tighten them one by one to avoid losing the screws.

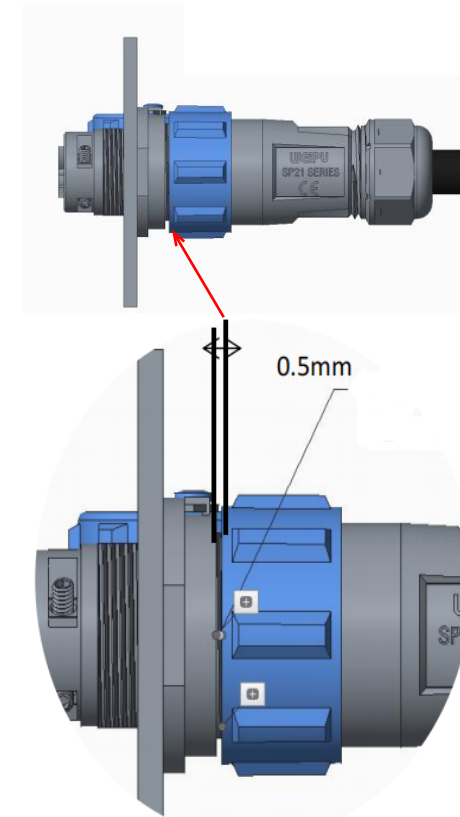


5. Tighten the rear-nut with a wrench.

Rear-nut Torque:

SP17 - 0.8N.m~1.0N.m

SP21 - 1.2N.m~1.5N.m



6. Align with the white dot on the connector, then lock the plug and socket with a torque of 0.8-1.2 N.m

Note: The distance between the socket and plug locking nut should be $\leq 0.5\text{mm}$.