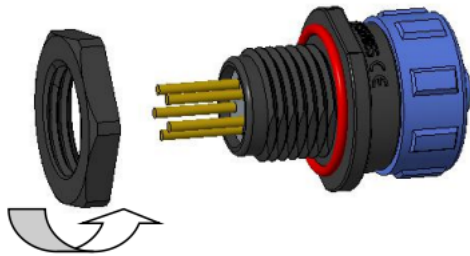
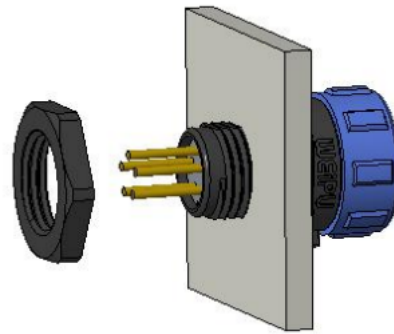


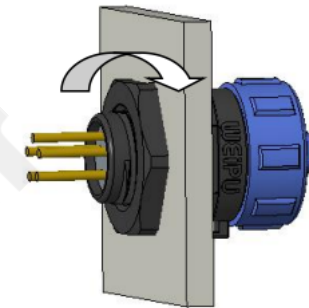
SP/SY Series Rear-Nut Socket Assembling Instruction for PCB Pin



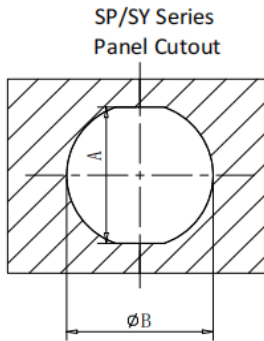
1. Slide off the rear-nut



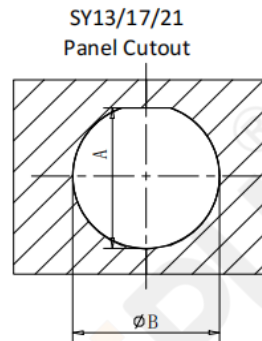
2. Put the socket into the panel according to the sizes below.



3. Tighten the rear-nut according to the torque specifications below.

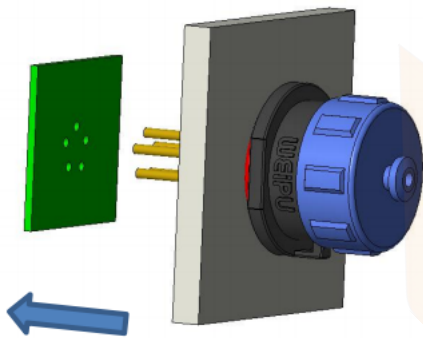


Series	A(mm)	B(mm)
SP11/SY11	9.9	11
SP13	11.8	13
SP17	15.6	17
SP21	19.8	21
SP25/SY25	23.1	25
SP29	26.8	29.2
SY29	26.6	29.2

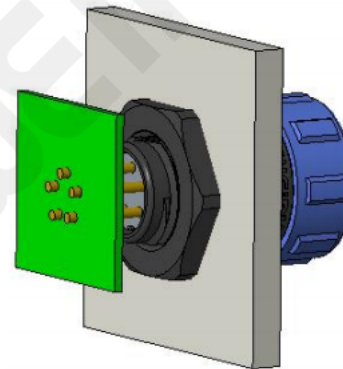


Series	A(mm)	B(mm)
SY13	12.3	13
SY17	16.1	17
SY21	20.2	21

Series	Torque (N.M)
SP11/SY11/SP13/SY13	0.5-0.6
SP17/SY17	0.9-1
SP21/SY21/SP25/SY25	1-1.1
SP29/SY29	1-1.1



4. Align the PCB tails with the holes on the PCB board and insert them.



5. Solder the PCB tails onto the PCB board.

Note:

- 1) The Iron cannot burn the board;
- 2) Ensure the pins do not exceed the board plane.