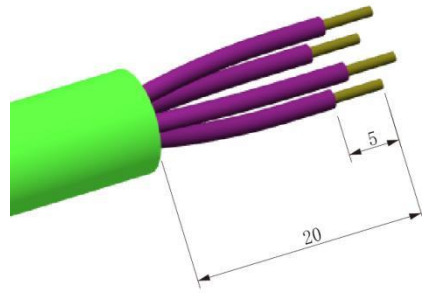
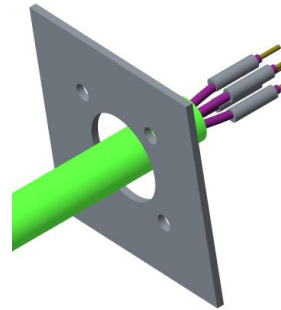


SF/SA12-28 square flange mount socket assembling instructio-Solder



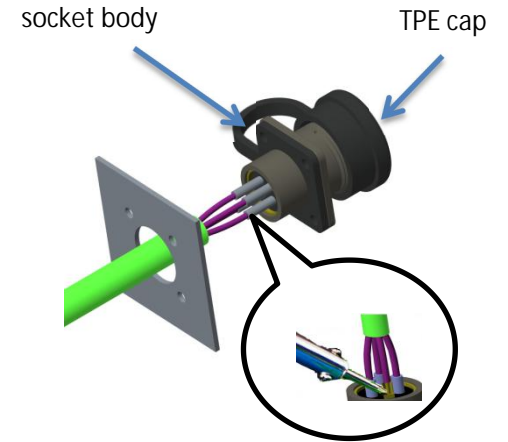
① SA/SF12-28 Strip length



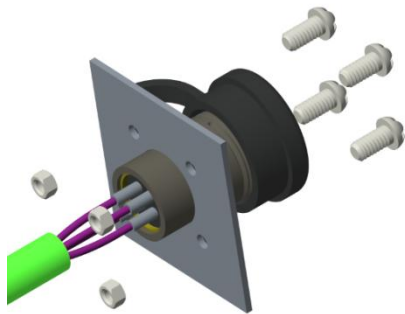
panel cutout

Series	φA (mm)	B (mm)	φC(mm)
SF12/SA12	12	13	2.3
SF16/SA16	16	20	3.2
SF20/SA20	20	22	3.2
SF24/SA24	24	26	3.2
SA28	28	30	3.2

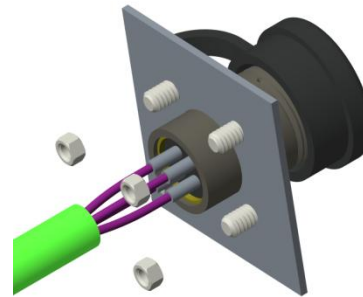
② Put the stripped cable through the panel based on above panel cutout size



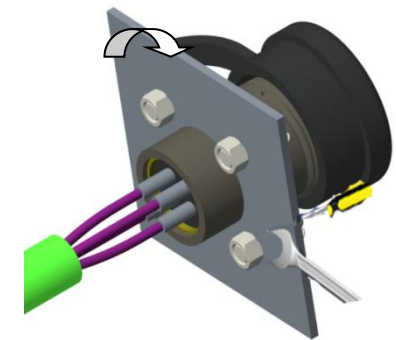
③ Put the stripped wire into contact holes and wrap with heat shrinkable tube after soldering.



④ Tighten the socket body and panel closely



⑤ Put the screws through the flange and panel hole



⑥ Tighten the screw according to torque of 0.5N.m