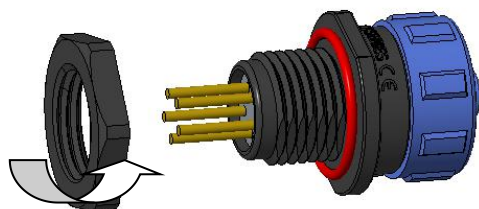
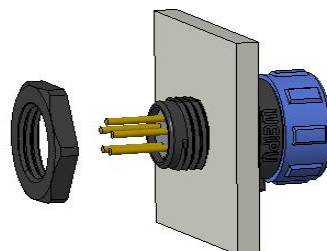


SP、SY Series PCB pins Rear-nut Socket Assembling Instruction

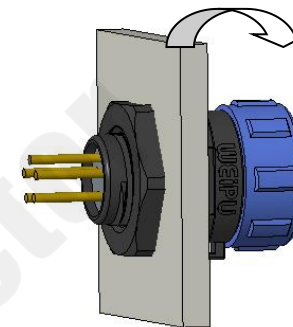
1、Unscrew the rear-nut.



2、Put the socket into the panel based on Panel cutout size .

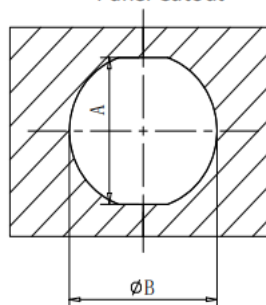


3、Tighten the rear-nut according to the below torque.



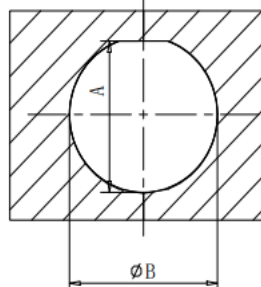
Series	Torque (N.M)
SP11/SY11/SP13/SY13	0.5-0.6
SP17/SY17	0.9-1
SP21/SY21/SP25/SY25	1-1.1
SP29/SY29	1-1.1

SP/SY Series
Panel Cutout



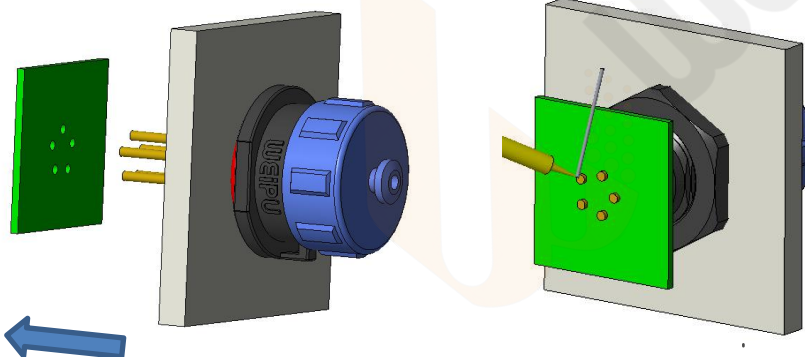
Series	A(mm)	B(mm)
SP11/SY11	9.9	11
SP13	11.8	13
SP17	15.6	17
SP21	19.8	21
SP25/SY25	23.1	25
SP29	26.8	29.2
SY29	26.6	29.2

SY13/17/21
Panel Cutout



Series	A(mm)	B(mm)
SY13	12.3	13
SY17	16.1	17
SY21	20.2	21

4、Align and install the PCB pins into the PCB board.



5、Solder the PCB tails on PCB board.

Note: 1) The Iron cannot burn the board;
2) Ensure the pins do not exceed the board plane.

Caution:

Do NOT apply sealants on plastic connector housings, which may lead to connector breakage.

If sealing is required, please use **LOCTITE-403 instant adhesive** or **Kafuter K-704 silicone sealant** for material compatibility.