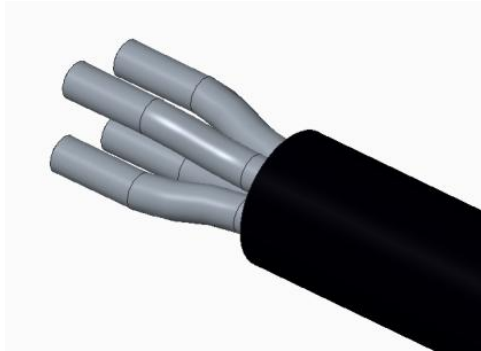
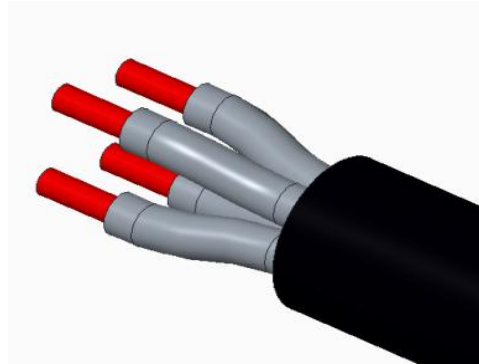


SP17_SP21 Cable connector new H-Screw-9 assembling instruction



1、Strip the cable with length of 12-15mm.



2、Strip the wire with length of 5-7mm.



3、Put the stripped cable through the compression nut and backshell.

Note:

1) Wire size range is 0.75mm² ~ 2mm²/18 ~ 12AWG

2) Cable OD range:

SP17 - 6~10mm

SP21 - I: 4.5-7mm, II: 7-12mm, III: 5-9mm

Caution: Do NOT apply sealants on plastic connector housings, which may lead to connector breakage.

If sealing is required, please use **LOCTITE-403 instant adhesive** or **Kafuter K-704 silicone sealant** for material compatibility.



4. Tighten the contact screw via Allen key.

Allen key spec:

SP17 - 1.3mm ; SP21 - 1.5mm

Screw Torque:

SP17 - 0.1N.m ~ 0.3N.m;

SP21 - 0.2N.m ~ 0.4N.m

Reminder: When assembling the screws, it's recommended to loosen and tighten one by one to avoid losing the screws.

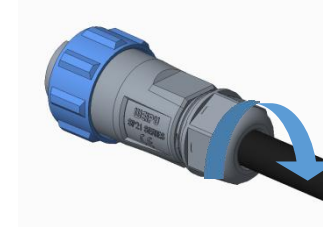


5. Tighten the backshell and plug main-part with wrench or other tools.

Torque:

SP17 - 0.7N.m ~ 1.0N.m

SP21 - 1.0N.m ~ 1.1N.m



6. Tighten the compression nut and backshell with wrench or other tools.

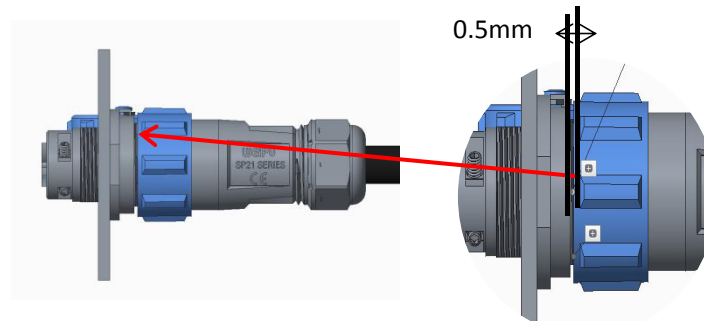
Torque:

SP17 - 0.8N.m ~ 1.2N.m

SP21 - 1.0N.m ~ 1.2N.m



7. Align with the white dot on connectors, then locking the plug and socket with torque of 0.8-1.2N.m



Note: The distance between socket and plug locking nut should be $\leq 0.5\text{mm}$.



Remark: The assembling processes for SP1710/SP2110 & SP1711/SP2111 are the same!