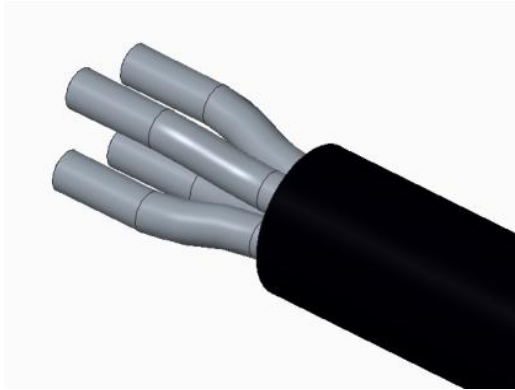
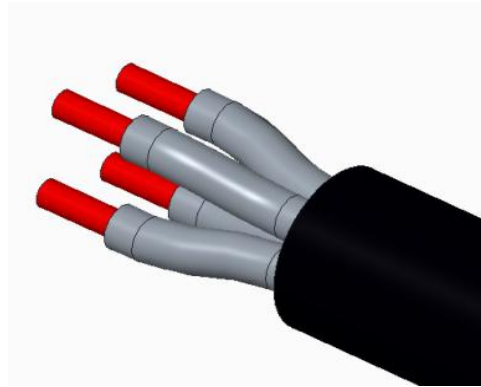


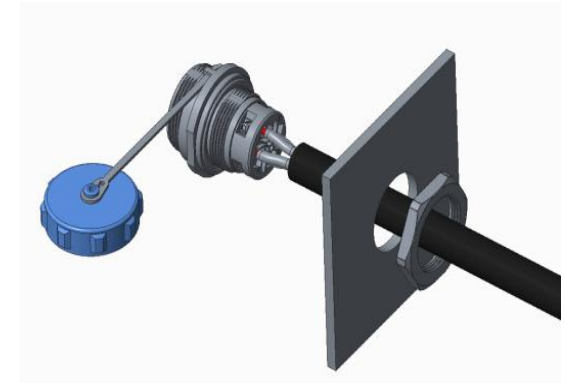
SP1712_SP2112 rear-nut socket new H-Screw-9 assembling instruction



1、Strip the cable with length of 12-15mm.



2、Strip the wire with length of 5-7mm.



3、Put the cable throught the rear-nut and panel.

Note:

1) Wire size range is 0.75mm²~2mm²/18~12AWG

2) Panel thickness: 3mm max

Caution: Do NOT apply sealants on plastic connector housings, which may lead to connector breakage.

If sealing is required, please use **LOCTITE-403 instant adhesive** or **Kafuter K-704 silicone sealant** for material compatibility.



4. Tighten the contact screw via Allen key.

Allen key spec:

SP17 - 1.3mm ; SP21 - 1.5mm

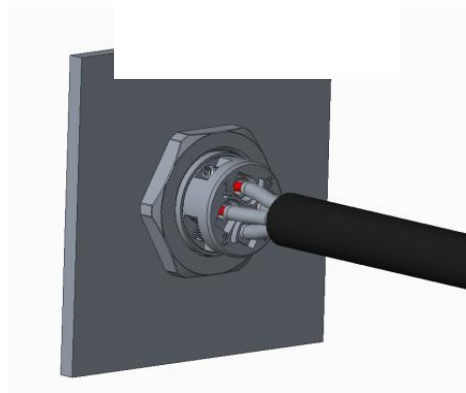
Screw Torque:

SP17 - 0.1N.m~0.3N.m

SP21 - 0.2N.m~0.4N.m

Reminder:

When assembling the screws, it's recommended to loosen & tighten one by one to avoid losing the screws.

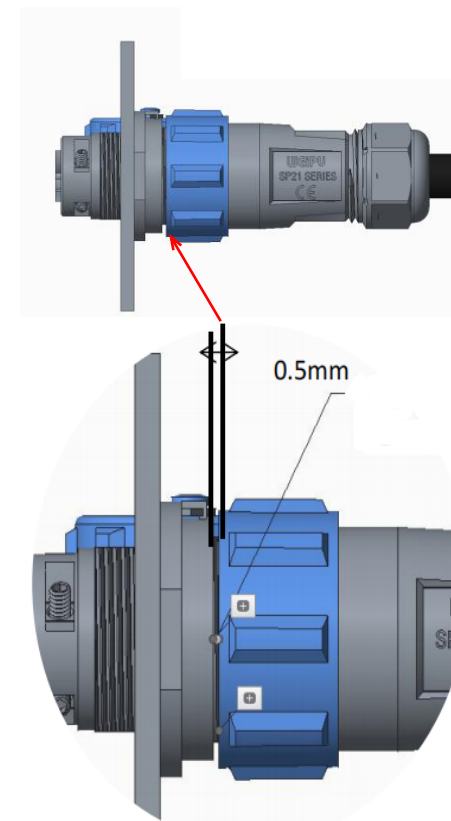


5. Tighten the rear-nut with wrench.

Rear-nut Torque:

SP17 - 0.8N.m~1.0N.m

SP21 - 1.2N.m~1.5N.m



6. Align with the white dot on connector, then locking the plug and socket with torque of 0.8-1.2N.m

Note: The distance between socket and plug locking nut should be $\leq 0.5\text{mm}$.