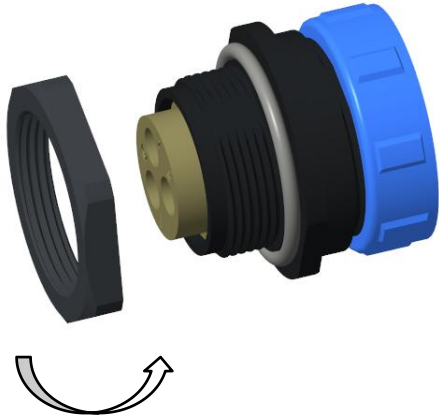
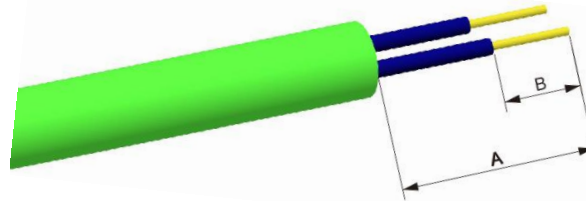


SP、SY Series Rear-nut Socket Assembling Instruction-Crimp

1、Screw out the rear-nut.

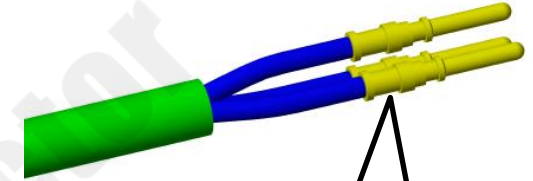


2、Strip the wire based on the recommended length below.

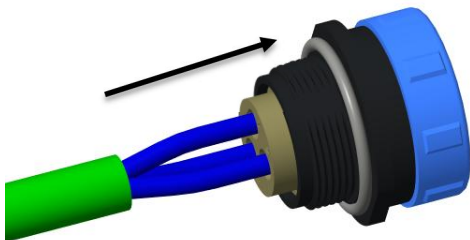


Series	A(mm)	B(mm)
SP17/SY17	22	6
SP21/SY21/SP25/SY25	22	6
SP29/SY29	22	6

3、Crimp the wire into contacts with suitable tools

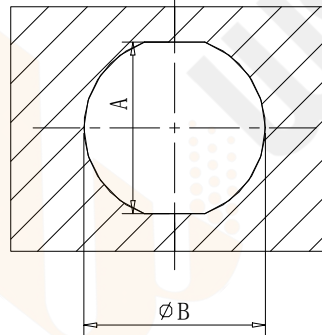


4、Install the crimped contacts into the insert holes



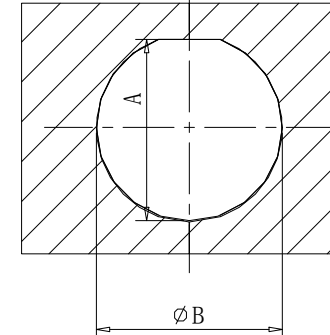
5、Drill the hole based on the suggested panel cutout size.

SP
panel cutout



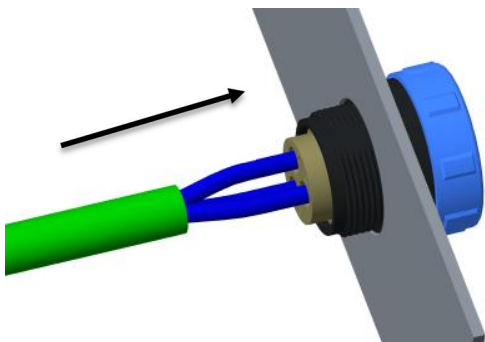
Series	A(mm)	B(mm)
SP17	15.6	17
SP21	19.8	21
SP25	23.1	25
SP29	26.8	29.2

SY
panel cutout

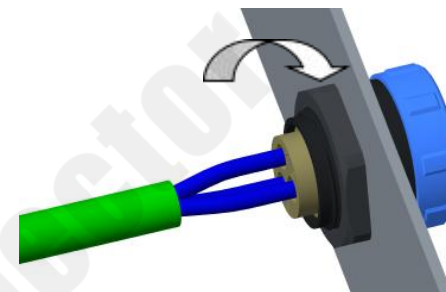


Series	A(mm)	B(mm)
SY17	16.1	17
SY21	20.2	21
SY25	23.1	25
SY29	26.6	29.2

6、 Put the assembled cable into the panel.



7、 Tighten the rear-nut according to the below torque



Series	Torque (N.M)
SP17/SY17	0.9-1
SP21/SY21/SP25/SY25	1-1.1
SP29/SY29	1-1.1

Caution: Do NOT apply sealants on plastic connector housings, which may lead to connector breakage.

If sealing is required, please use **LOCTITE-403 instant adhesive** or **Kafuter K-704 silicone sealant** for material compatibility.