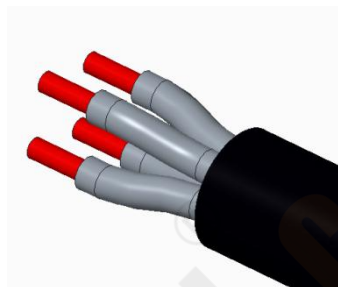
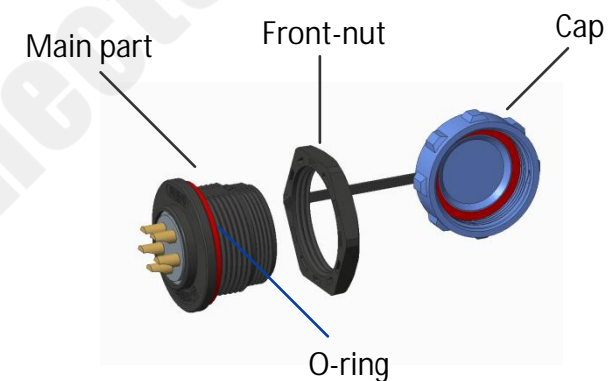


1. Cable Strip length : 20-22mm

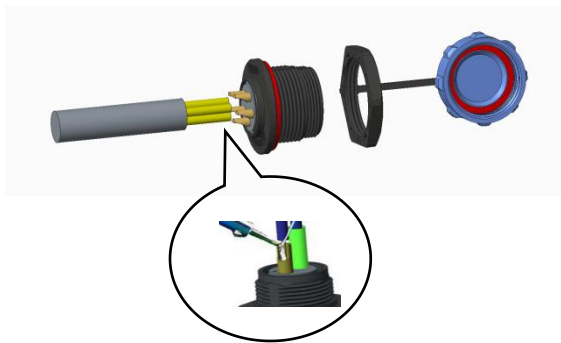


2. Inner Wire Strip length: 5-7mm

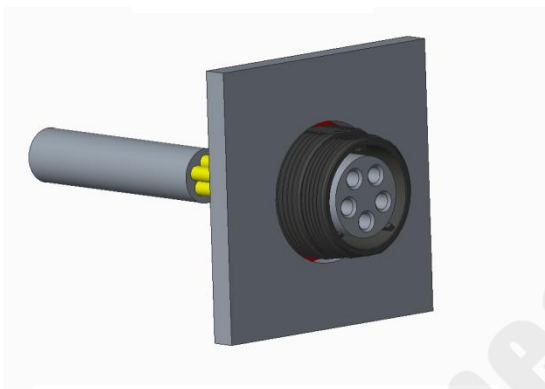


3. Slide off the front-nut and cap

Caution: Do NOT apply sealants on plastic connector housings, which may lead to connector breakage.
If sealing is required, please use **LOCTITE-403 instant adhesive** or **Kafuter K-704 silicone sealant** for material compatibility.

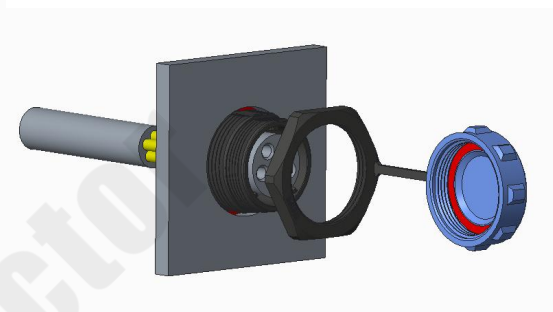


4. Solder the wire and then wrap it with a heat-shrinkable tube.

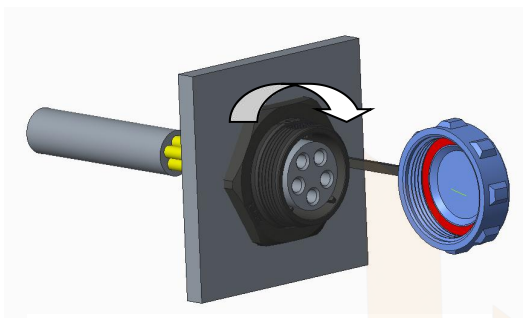


5. Put the socket into the panel.

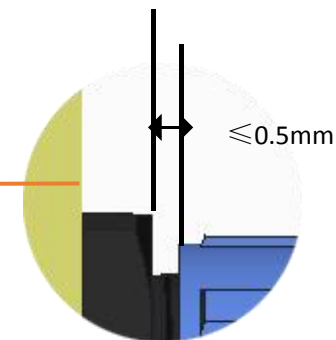
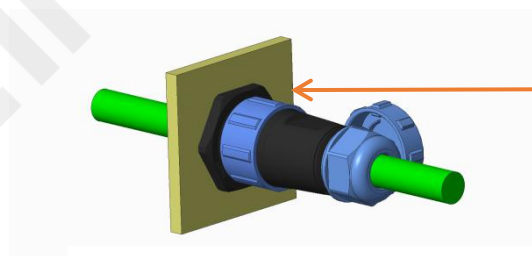
Panel cutout: 25*23.4mm
Panel thickness: 5mm max



6. Install the panel and socket closely.



7. Tighten the front-nut according to torque of 1.1-1.2 N.m



Note : After mating the socket and plug, the distance in between should be $\leq 0.5\text{mm}$.