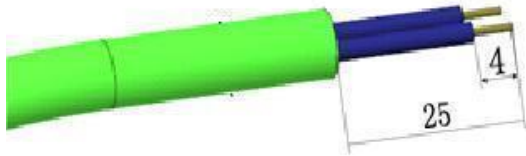
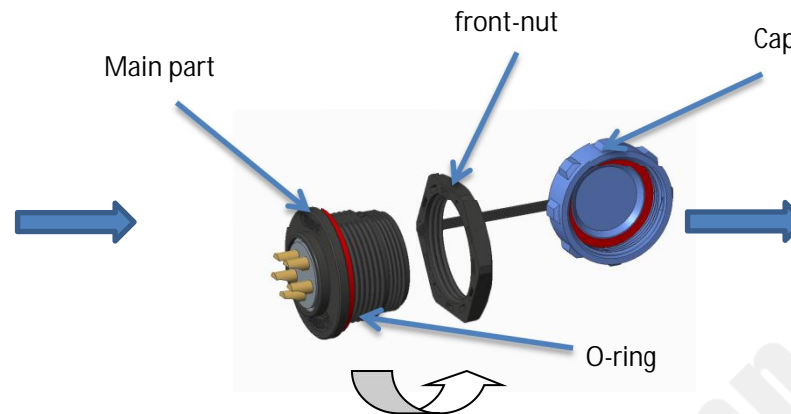


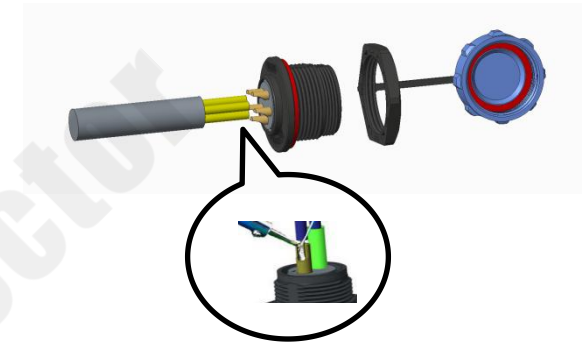
SP1315 front-nut Socket Assembling Instruction



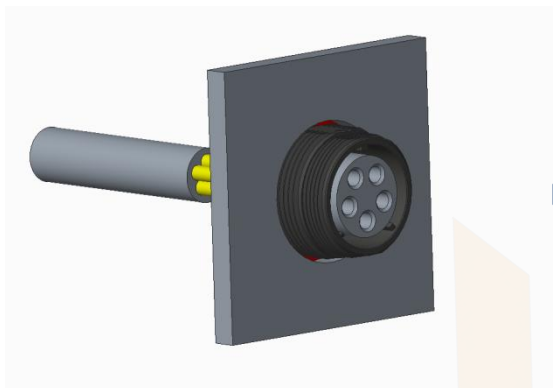
1. Strip length



2. Slide off the front-nut and cap

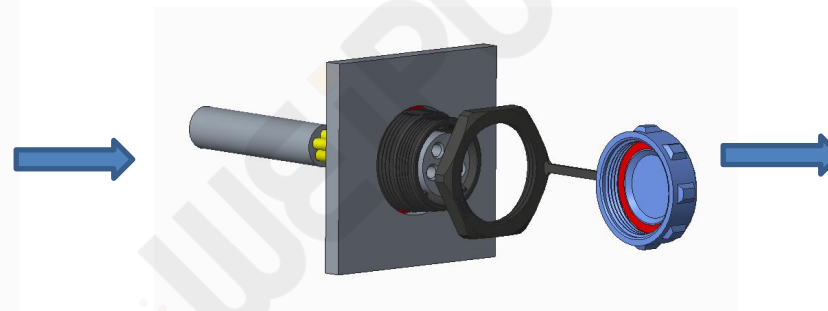


3. Solder the wire and then wrap it with a heat-shrinkable tube.

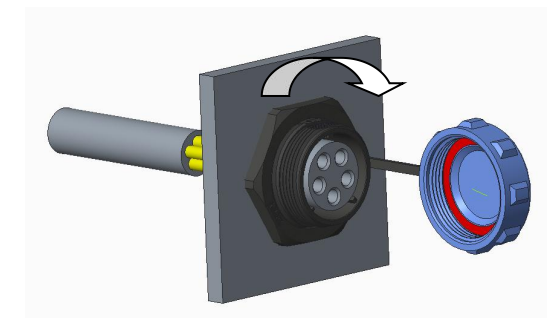


4. Put the socket into the panel.

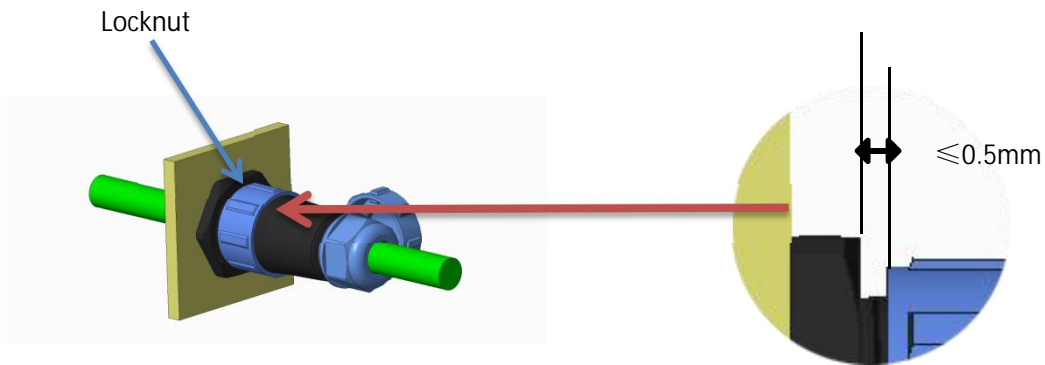
Panel cutout: 16*14.8mm
Panel thickness: 4mm max



5. Install the panel and socket closely.



6. Tighten the front-nut according to torque of 0.8-1.0 N.m



Note : After mating the socket and plug,
the distance in between should be $\leq 0.5\text{mm}$.

Caution: Do NOT apply sealants on plastic connector housings, which may lead to connector breakage.
If sealing is required, please use **LOCTITE-403 instant adhesive** or **Kafuter K-704 silicone sealant** for material compatibility.