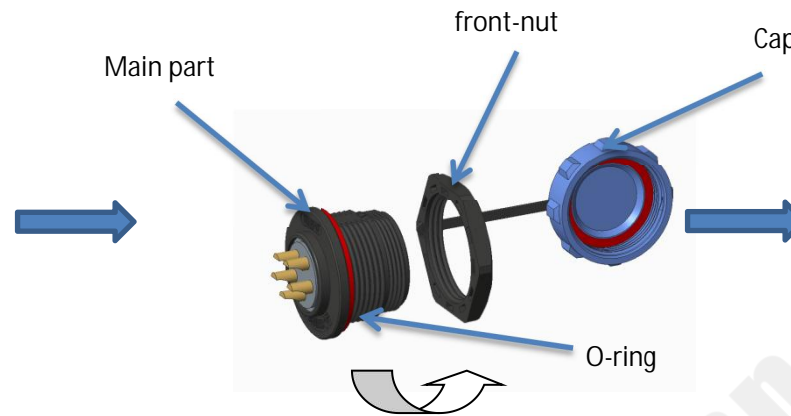


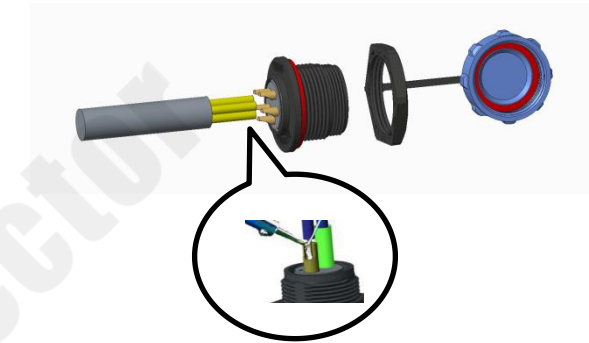
## SP1315 front-nut Socket Assembling Instruction



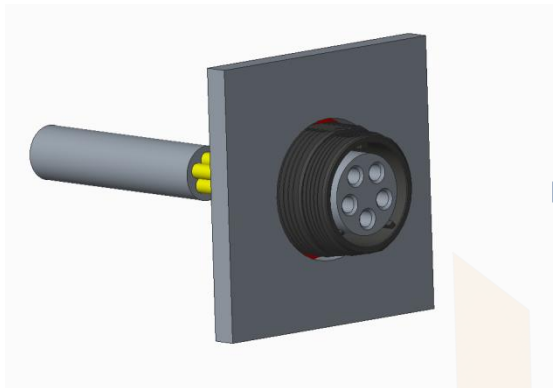
1. Strip length



2. Slide off the front-nut and cap

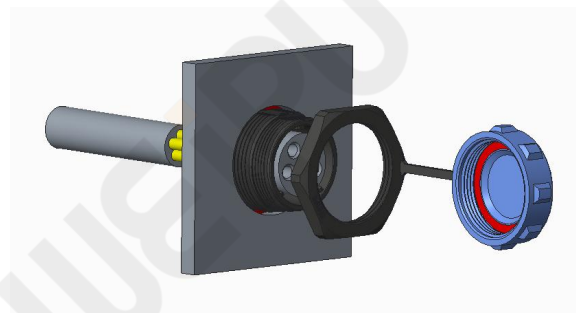


3. Solder the wire and then wrap it with a heat-shrinkable tube.

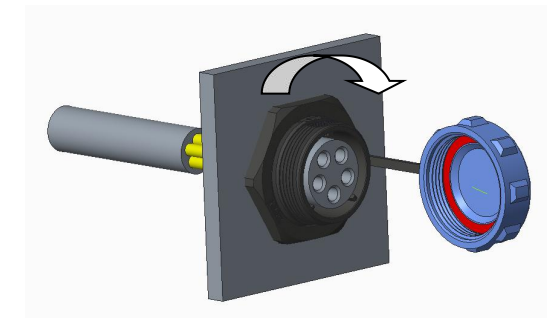


4. Put the socket into the panel.

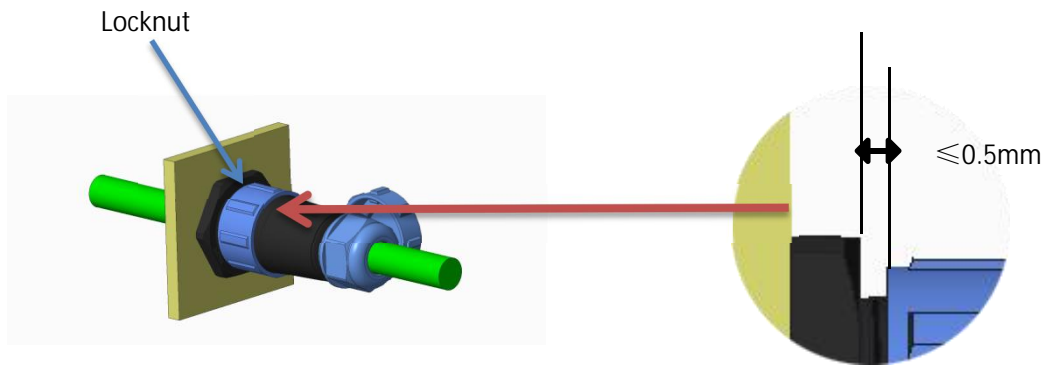
Panel cutout: 16\*14.8mm  
Panel thickness: 4mm max



5. Install the panel and socket closely.



6. Tighten the front-nut according to torque of 0.8-1.0 N.m



Note : After mating the socket and plug,  
the distance in between should be  $\leq 0.5\text{mm}$ .

WEIPU<sup>®</sup> Connector