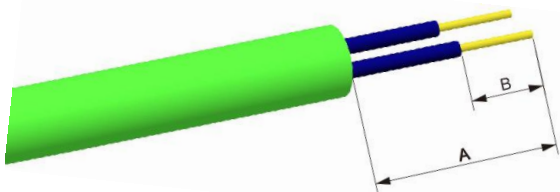


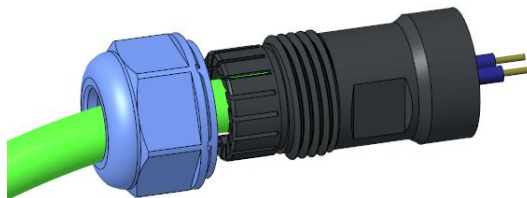
SP、SY cable plug assembling instruction screw-2

1、Strip length



Series	A(mm)	B(mm)
SP21/SY21/SP25/SY25	22	6
SP29/SY29	22	6

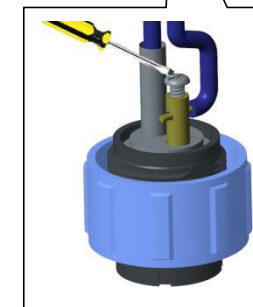
2、Put the stripped cable through all parts



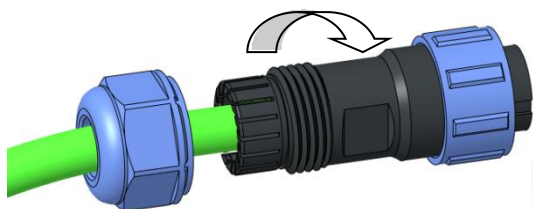
3、Put the stripped wire into contact holes and wrap with eat shrinkable tube after tighten the screws.



Screw locking torque
0.1-0.15N.M

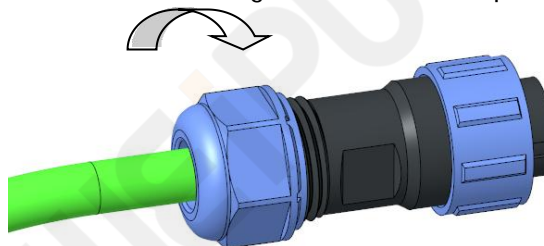


4、Tighten the backshell and the main part clockwise according to the below torque



Series	Torque (N.M)
SP21/SY21/SP25/SY25	1.0-1.1
SP29/SY29	1.5-1.6

5、Tighten the compression nut and backshell clockwise according to the below torque



Series	Torque (N.M)
SP21/SY21/SP25/SY25	1.0-1.1
SP29/SY29	2.5-2.6

Caution: Do NOT apply sealants on plastic connector housings, which may lead to connector breakage.

If sealing is required, please use **LOCTITE-403 instant adhesive** or **Kafuter K-704 silicone sealant** for material compatibility.