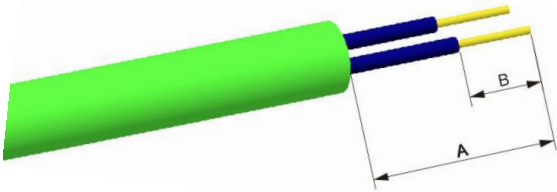


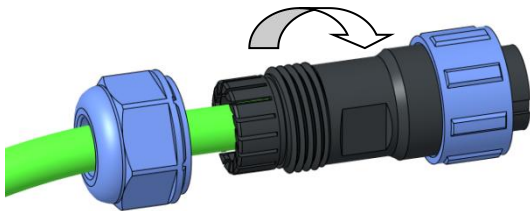
## SP、SY Cable Plug Assembling Instruction-Solder

### 1、Strip length



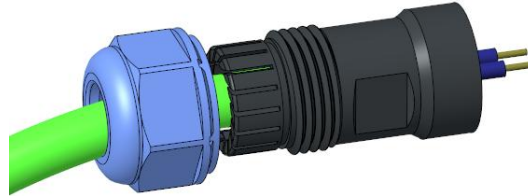
Series	A(mm)	B(mm)
SP11/SY11	22	6
SP13/SY13	22	6
SP17/SY17	22	6
SP21/SY21/SP25/SY25	22	6
SP29/SY29	22	6

### 4、Tighten the backshell and the main part clockwise according to the below torque

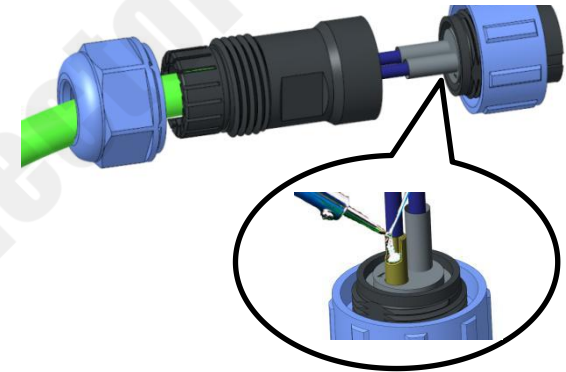


Series	Torque ( N.M )
SP11/SP13/SY11/SY13	0.5-0.6
SP17/SY17	0.9-1.0
SP21/SY21/SP25/SY25	1.0-1.1
SP29/SY29	1.5-1.6

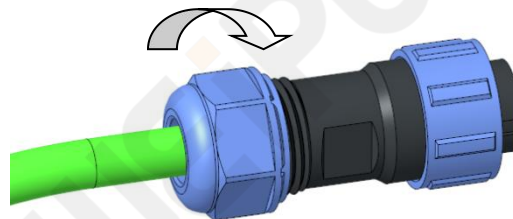
### 2、Put the stripped cable through all parts



### 3、Solder the wire to the contact and wrap with heat shrinkable tube after soldering.



### 5、Tighten the compression nut and backshell clockwise according to the below torque



Series	Torque ( N.M )
SP11/SP13/SY11/SY13	0.5-0.6
SP17/SY17	0.9-1.0
SP21/SY21/SP25/SY25	1.0-1.1
SP29/SY29	2.5-2.6

### Caution:

Do NOT apply sealants on plastic connector housings, which may lead to connector breakage.

If sealing is required, please use **LOCTITE-403 instant adhesive** or **Kafuter K-704 silicone sealant** for material compatibility.