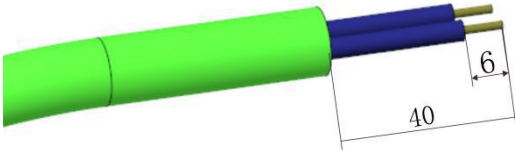
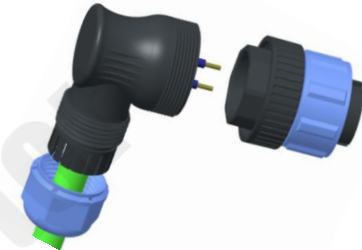
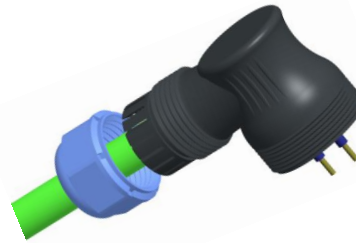


SP21、SY21 angled cable plug assembling instruction

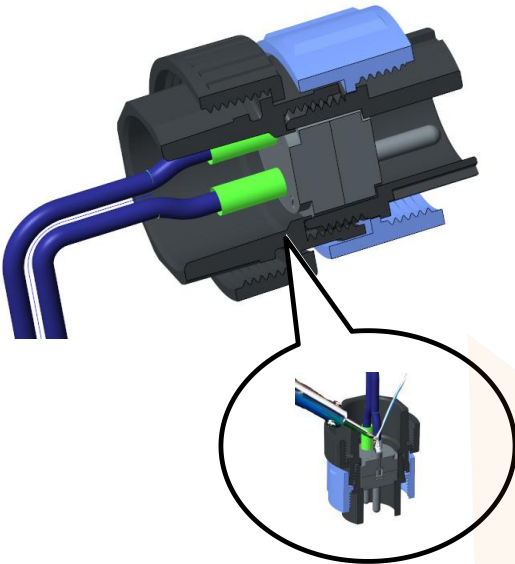
1、Strip length



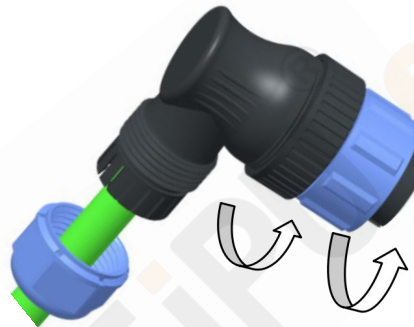
2、Put the stripped cable through all parts



3、Solder the wire to the contact and wrap with heat shrinkable tube after soldering.



4、Tighten the backshell and the main part clockwise according to the below torque



5、Tighten the compression nut and backshell clockwise according to the below torque



Series	Locking nut Torque (N.M)
SP21/SY21	1.0-1.1

Series	Compression nut Torque(N.M)
SP21/SY21	1.0-1.1

Caution: Do NOT apply sealants on plastic connector housings, which may lead to connector breakage.

If sealing is required, please use **LOCTITE-403 instant adhesive** or **Kafuter K-704 silicone sealant** for material compatibility.