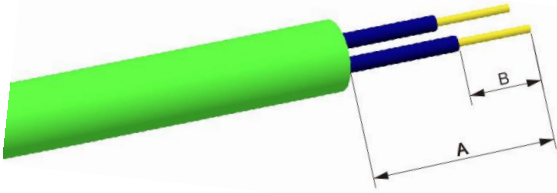


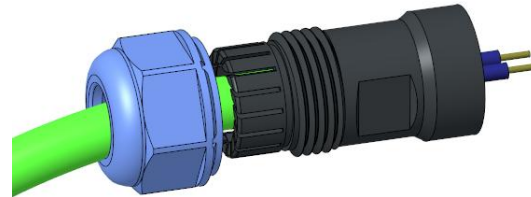
SP、SY Cable Plug Assembling Instruction-Solder

1、Strip length

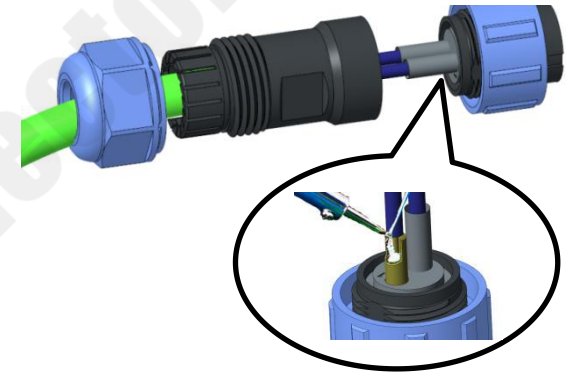


Series	A(mm)	B(mm)
SP11/SY11	22	6
SP13/SY13	22	6
SP17/SY17	22	6
SP21/SY21/SP25/SY25	22	6
SP29/SY29	22	6

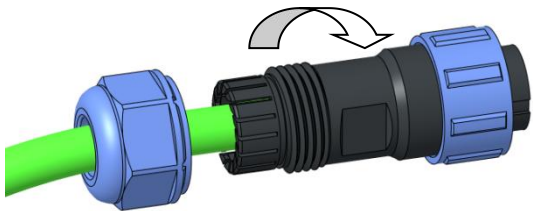
2、Put the stripped cable through all parts



3、Solder the wire to the contact and wrap with heat shrinkable tube after soldering.

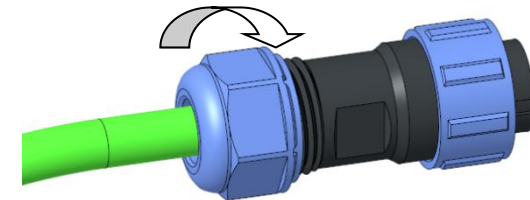


4、Tighten the backshell and the main part clockwise according to the below torque



Series	Torque (N.M)
SP11/SP13/SY11/SY13	0.5-0.6
SP17/SY17	0.9-1.0
SP21/SY21/SP25/SY25	1.0-1.1
SP29/SY29	1.5-1.6

5、Tighten the compression nut and backshell clockwise according to the below torque



Series	Torque (N.M)
SP11/SP13/SY11/SY13	0.5-0.6
SP17/SY17	0.9-1.0
SP21/SY21/SP25/SY25	1.0-1.1
SP29/SY29	2.5-2.6