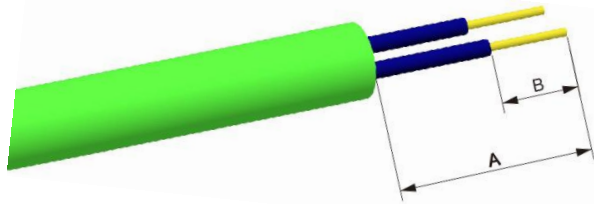
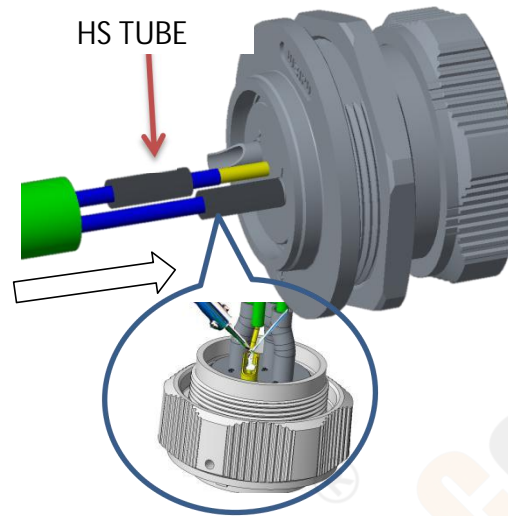
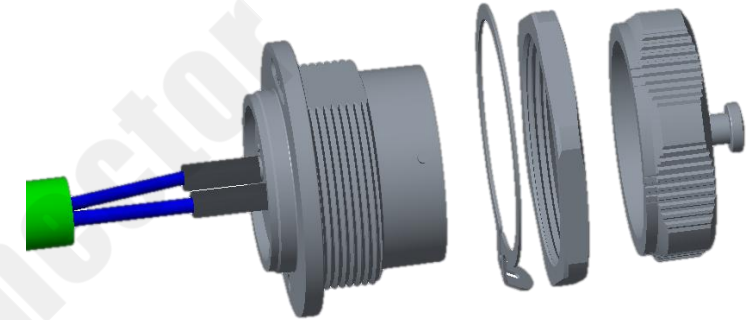


## 1 Strip length

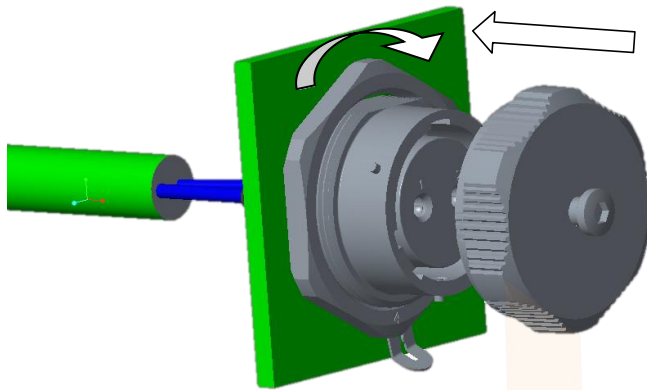


Series	A (mm)	B (mm)
WY16-28	25	8

## 2. Solder the wire to the contact and wrap with heat shrinkable tube after soldering.

3. Unscrew the cap and locknut after soldering the wire, then install the socket on the panel closely.  
( Panel thickness: 5mm max )

## 4. Tighten the locknut according to below torque



Series	Torque ( N.m )
WY16-28	1.5-3

