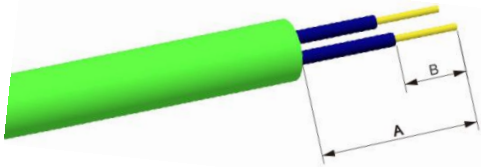


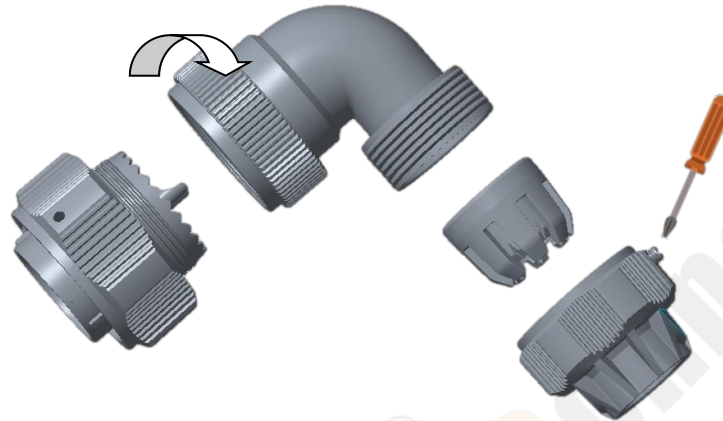
# WY16-28 Angled plug with metal nut Assembling instruction-Solder

1. Strip length

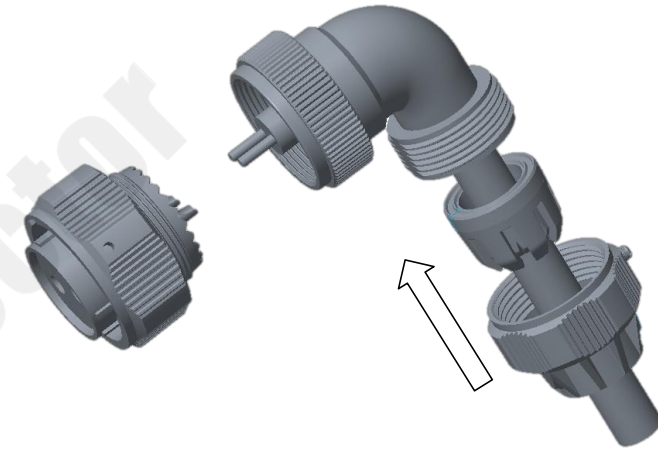


Series	A (mm)	B (mm)
WY16-28	35	8

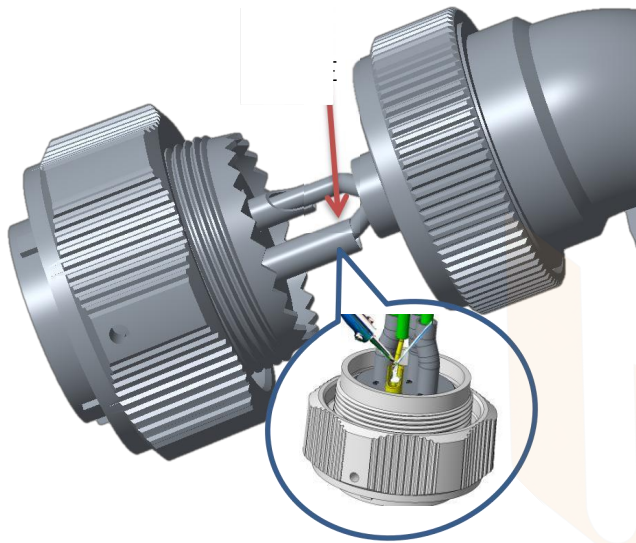
2. Unscrew all the parts



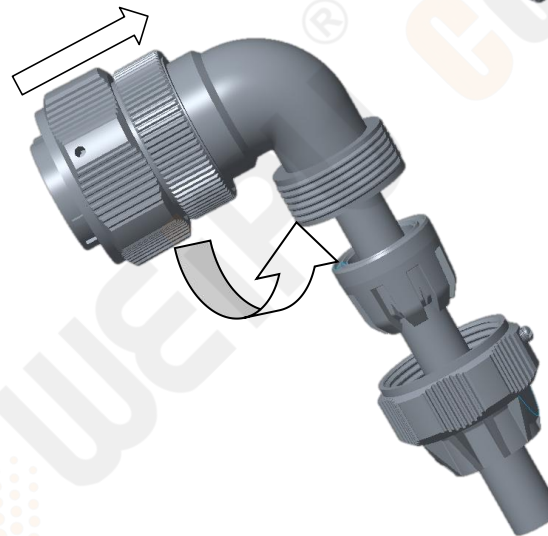
3. Put the stripped cable through all the parts



4. Solder the wire to the contact and wrap with heat shrinkable tube after soldering.



Torque of screw: 0.1-0.15N.m



5. Tighten the hackshell and compression nut according to below torque

Series	Torque ( N.m )
WY16-28	1.5-3