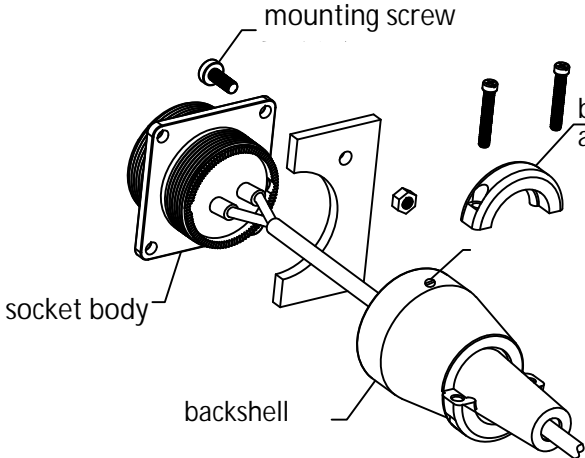
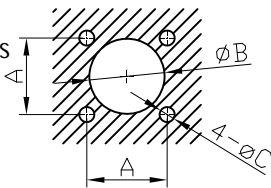


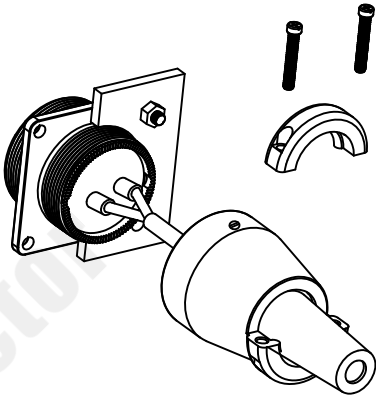
WS16-55 in-line panel socket with PVC sleeve assembling instruction-Solder



Panel cutout (mm)

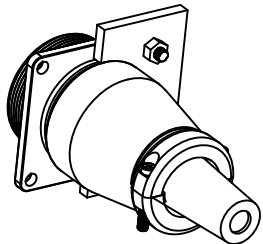


Series	A	B	C
WS16	20	16.5	3.2
WS20	22	20.5	3.2
WS24	26	24.5	3.2
WS28	30	28.5	3.2
WS32	32	32.5	3.5
WS40	40	40.5	4.5
WS48	48	48.5	4.5
WS55	52	55.5	4.5

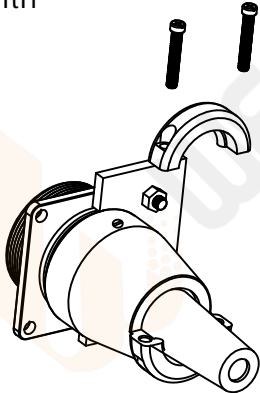


4. Install the socket on the panel

1. Cut holes on the panel according to the above size
2. Put the stripped cable through all parts
3. Solder the wire to the contacts and warp with heat shrinkable tube.



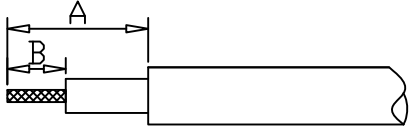
6. Tighten the mounting screws according to the belowtorque



5. Tighten the backshell on the socket cosely and tighten the screws on backshell with torque of 0.1-0.15N.m

Series	Screw size	Torque
16-32	M3	0.12-0.14N•m
40-55	M4	0.3-0.5N•m

Strip Length



	A (mm)	B (mm)
16	18	8
20-28	25	
32-55	30	

