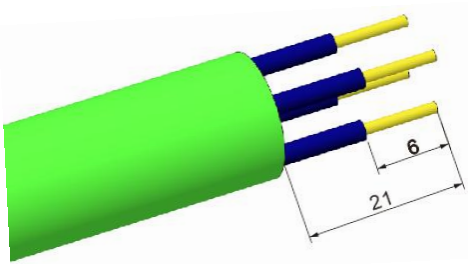
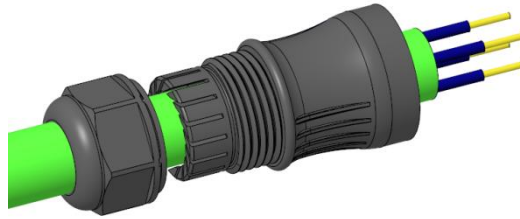


## WA22J4TK2、WA22K4TK2 Assembling Instruction

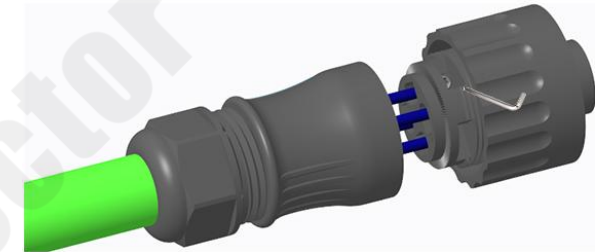
1. Strip the cable. (mm)



2. Put the cable through all parts.

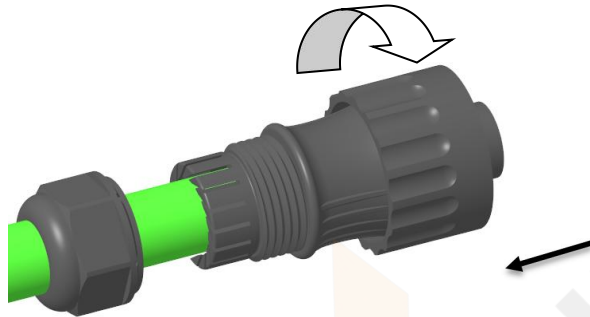


3. Tin screw to contact.



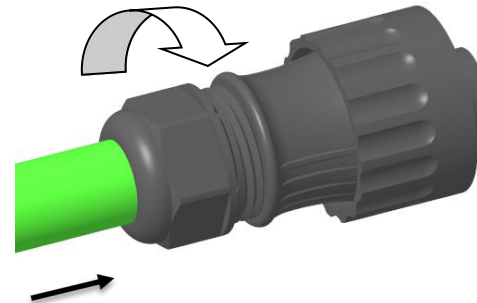
Standard Torque (N*m)
0.30-0.50

4. Tighten the backshell according to the torque.



Standard Torque (N*m)
1.5-2.0

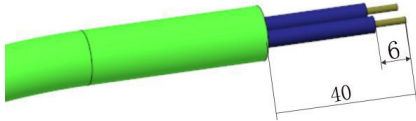
5. Tighten the compression nut according to the torque.



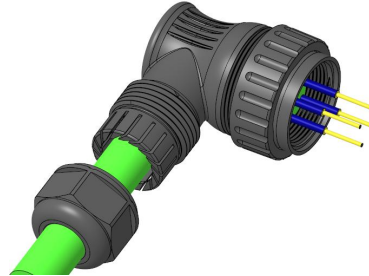
Standard Torque (N*m)
1.5-2.0

## WA22J4TL2、WA22K4TL2 Assembling Instruction

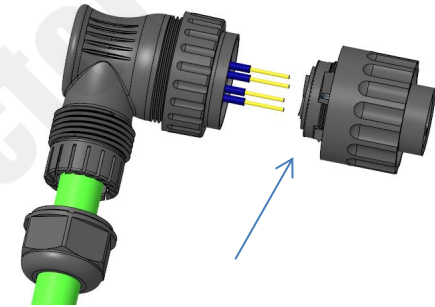
1. Strip the cable. (mm)



2. Put the cable through all parts.

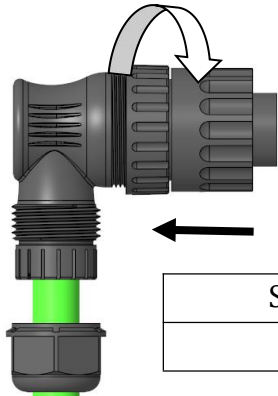


3. Tin screw to contact.



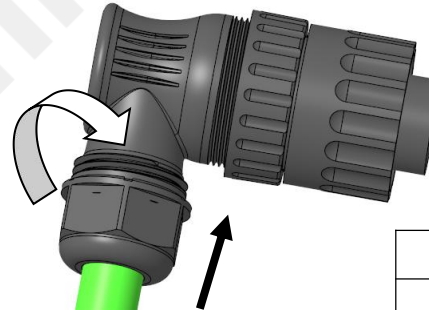
Standard Torque (N*m)
0.30-0.50

4. Tighten the backshell according to the torque.



Standard Torque (N*m)
1.5-2.0

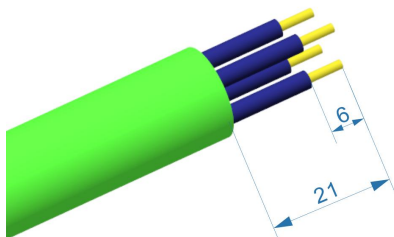
5. Tighten the compression nut according to the torque.



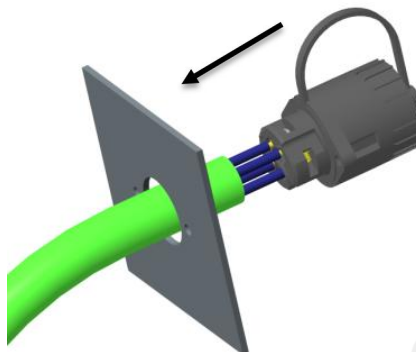
Standard Torque (N*m)
1.5-2.0

## WA22K4Z2、WA22J4Z2 Assembling Instruction

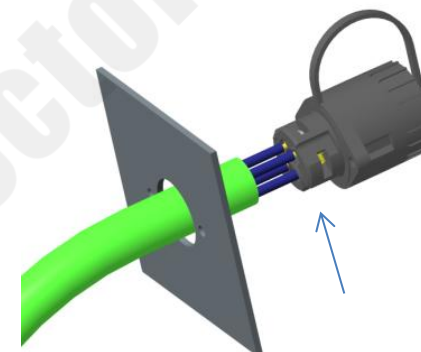
1. Strip the cable. (mm)



2. Put the cable through all parts.

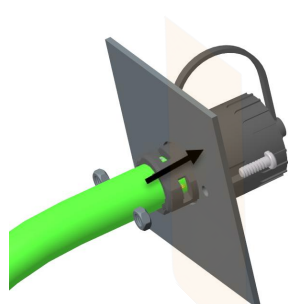


3. Tin screw to contact.

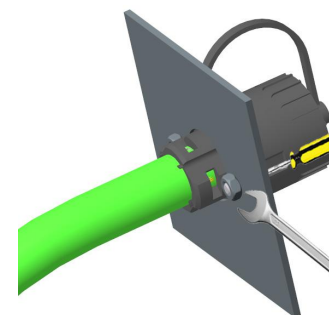


Standard Torque (N*m)
0.30-0.50

4. Put the socket through the panel cut hole.

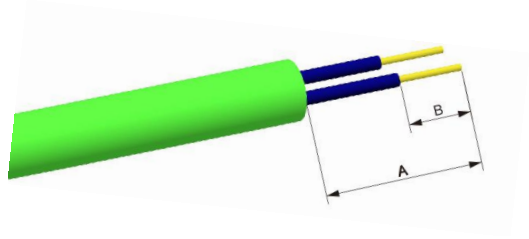


5. Tighten the screws to fix the socket.



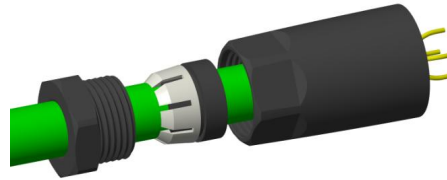
## WA22J4TE2、WA22K4ZE2 Assembling Instruction

1. Strip the cable. (mm)

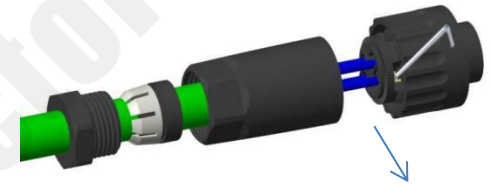


	A(mm)	B(mm)
WA22K4ZE2	21	6

2. Put the cable through all parts.

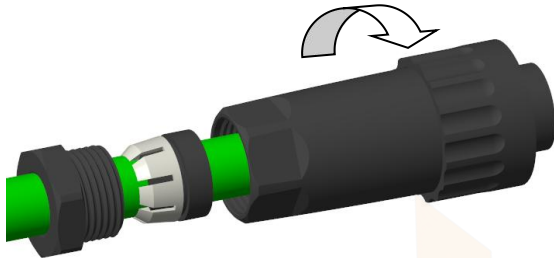


3. Tin screw to contact.



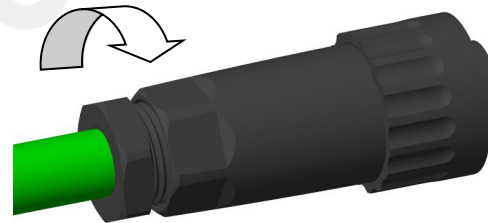
Standard Torque (N*m)
0.30-0.50

4. Tighten the backshell according to the torque.



Standard Torque (N*m)
1.5-2.0

5. Tighten the compression nut according to the torque.



Standard Torque (N*m)
1.5-2.0