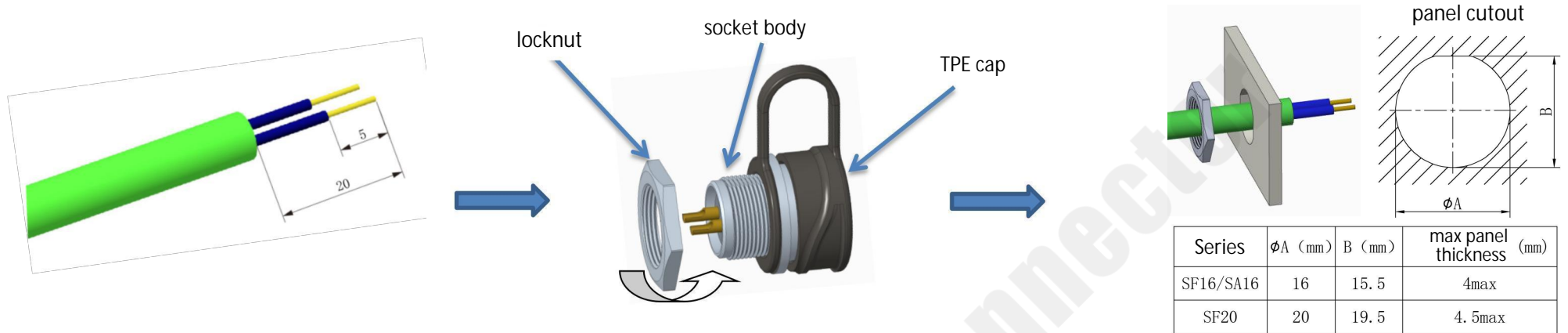


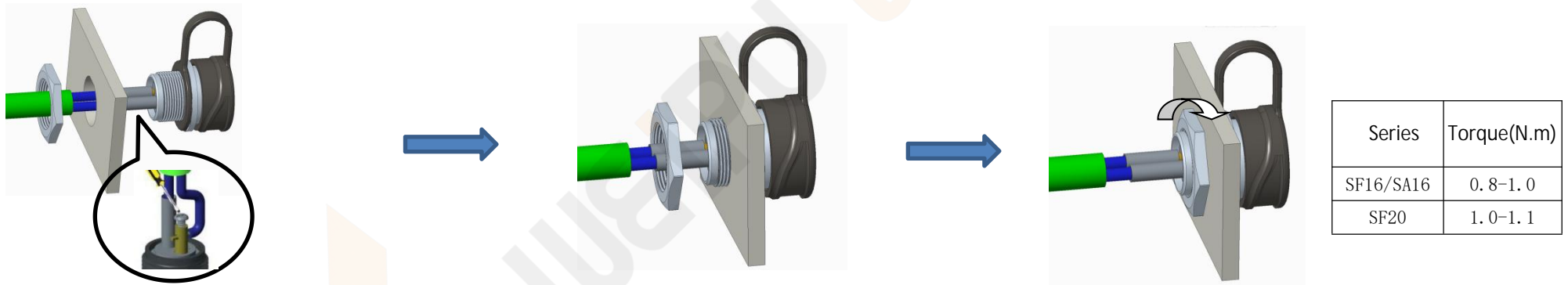
SA/SF16-20 rear-nut mount socket assembling instruction-Screw



① SA/SF16 SF20 Strip length refer to the right table

② Unscrew the locknut

③ Put the stripped cable through the locknut and panel



④ Put the stripped wire into contact holes and wrap with heat shrinkable tube after tightening the screws. Screw torque:0.1-0.15N.m

⑤ Tighten the socket body and panel closely

⑥ Tighten the locknut according to above torque