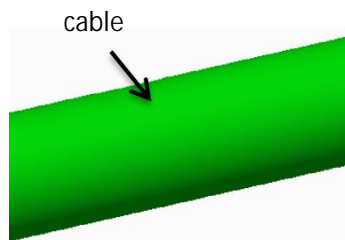
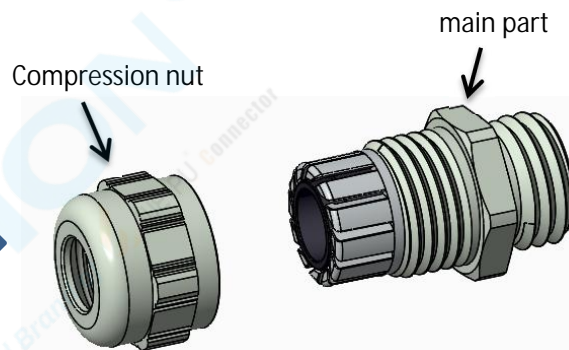


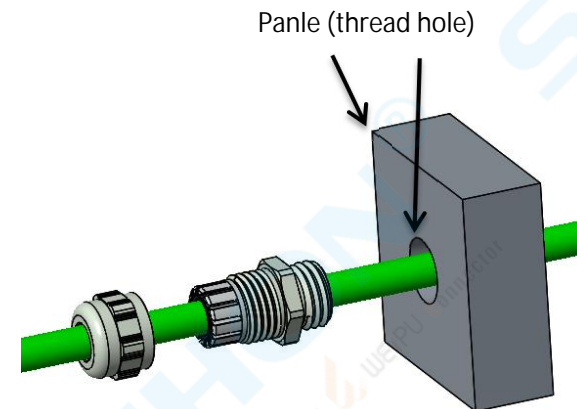
HSMS SUS cable gland Assembling Instruction (without locknut)



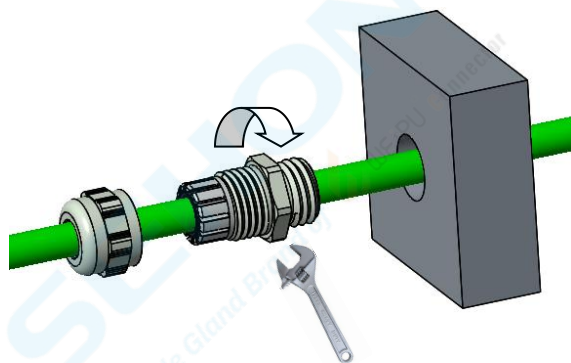
- ① Please refer to the cable OD ranges listed in below table



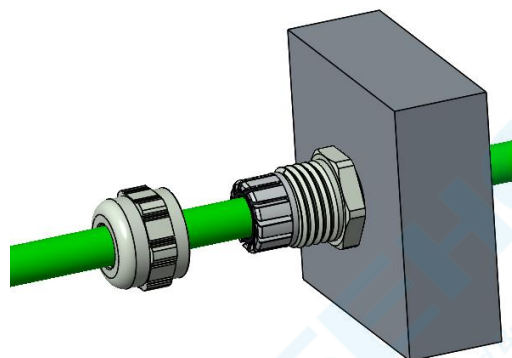
Unscrew the compression nut.



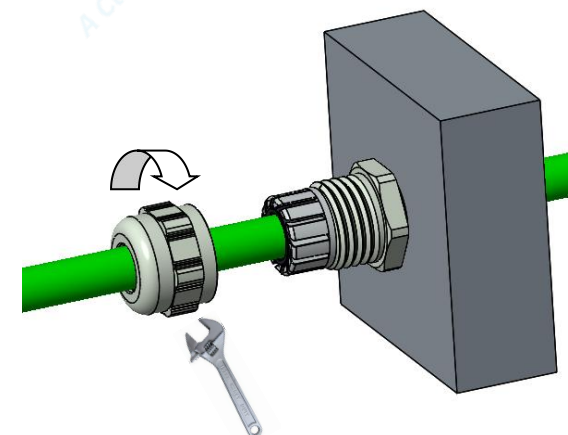
- ③ Put the cable through panel, main part and compression nut.



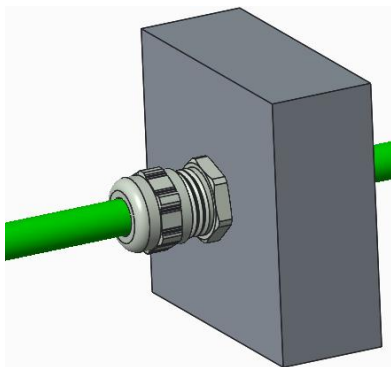
- ④ Tighten the main part on the panel by using a wrench. Refer to the torque listed in below table.



- ⑤ Finish installation of the main part.



- ⑥ Tighten the compression nut and the main part by using a wrench. Refer to the torque listed in below table.



⑦ Complete.

P/N	Cable OD (mm)
HSMS. M12. A	2-5
HSMS. M12. B	3-6.5
HSMS. M16. A	2-6
HSMS. M16. B	4-8
HSMS. M20. A	5-10
HSMS. M20. B	6-12
HSMS. M22	10-14
HSMS. M25. A	9-16
HSMS. M25. B	13-18
HSMS. M32. A	13-20
HSMS. M32. B	18-25
HSMS. M32. C	15-21
HSMS. M40. A	20-26
HSMS. M40. B	25-32
HSMS. M40. C	19-27
HSMS. M50. A	25-31
HSMS. M50. B	32-38
HSMS. M63. A	29-35
HSMS. M63. B	37-44

P/N	Cable OD (mm)
HSMS. PG7. A	2-5
HSMS. PG7. B	3-6.5
HSMS. PG9. A	2-6
HSMS. PG9. B	4-8
HSMS. PG11. A	5-10
HSMS. PG11. B	3-7
HSMS. PG13. 5. A	6-12
HSMS. PG13. 5. B	5-10
HSMS. PG16. A	10-14
HSMS. PG16. B	7-12
HSMS. PG21. A	13-18
HSMS. PG21. B	9-16
HSMS. PG29. A	18-25
HSMS. PG29. B	13-20
HSMS. PG36. A	22-32
HSMS. PG36. B	20-26
HSMS. PG42. A	32-38
HSMS. PG42. B	25-31
HSMS. PG48. A	37-44
HSMS. PG48. B	29-35

P/N	Torque of main part (N•m)
GMS. M12	1.5-2.5
GMS. M16	2.5-3.5
GMS. M20	2.5-3.5
GMS. M22	2.5-3.5
GMS. M25	2.7-4.5
GMS. M32	4.5-6.5
GMS. M40	4.5-6.5
GMS. M50	8.0-10.0
GMS. M63	8.0-10.0
GMS. PG7	1.5-2.5
GMS. PG9	2.5-3.5
GMS. PG11	2.5-3.5
GMS. PG13. 5	2.5-3.5
GMS. PG16	2.5-3.5
GMS. PG21	2.7-4.5
GMS. PG29	4.5-6.5
GMS. PG36	4.5-6.5
GMS. PG42	8.0-10.0
GMS. PG48	8.0-10.0

P/N	Torque of nut (N•m)
HSMS. M12	2.0-3.5
HSMS. M16	2.5-4.5
HSMS. M20	2.5-4.5
HSMS. M22	2.5-4.5
HSMS. M25	2.5-4.5
HSMS. M32	2.5-4.5
HSMS. M40	5.0-8.0
HSMS. M50	5.0-8.0
HSMS. M63	5.0-8.0
HSMS. PG7	2.0-3.5
HSMS. PG9	2.5-4.5
HSMS. PG11	2.5-4.5
HSMS. PG13. 5	2.5-4.5
HSMS. PG16	2.5-4.5
HSMS. PG21	2.5-4.5
HSMS. PG29	2.5-4.5
HSMS. PG36	5.0-8.0
HSMS. PG42	5.0-8.0
HSMS. PG48	5.0-8.0