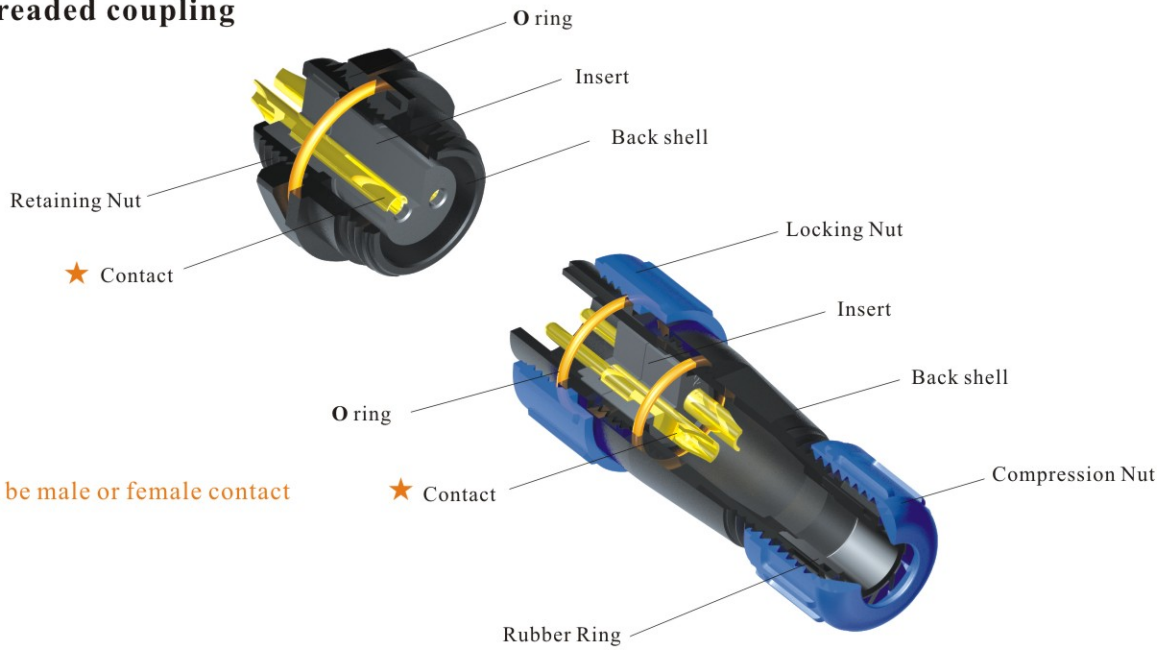




● IP68 Threaded coupling



★ Each side can be male or female contact

Material and spec

Product model	Connector	Overmolded Cable Assemblies
Coupling	Threaded coupling	Threaded coupling
Shell material	Nylon66, fire resistance : V-0	PC、PVC,fire resistance:V-0;Anodizing Aluminium Proess
Insert material	PPS max temperature 260 °C	PPS max temperature 260 °C
Contact material	Brass with gold plating	Brass with gold plating
Termination	SP13:solder, SP17:solder, SP21:solder / screw	
Cable outer diameter range	SP13 I: 4-6.5mm SP13 II: 5-8mm SP17 : 6-10mm SP21 I: 4.5-7mm SP21 II: 7-12mm	
IP rating	IP68	IP68
Mating cycle	>500	>500
Temperature range	-25°C ~ +85°C	-20°C ~ +85°C
Insulation resistance MΩ	2000	2000

SP17 Series IP68



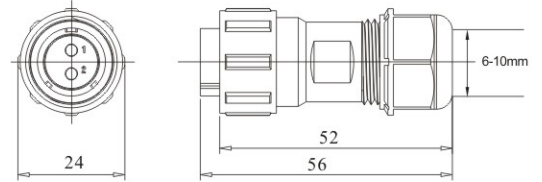
SP1710 / P—

SP1710 / S—

Cable connector

Mate with SP1711, SP1712

Number of contact: 2, 3, 4, 5, 7, 9

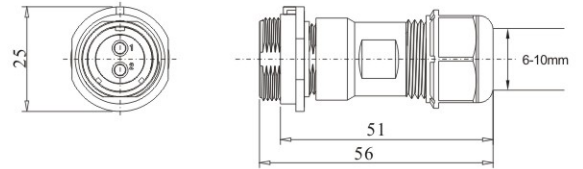


SP1711 / P—

SP1711 / S—

In-line cable connector

Mate with SP1710



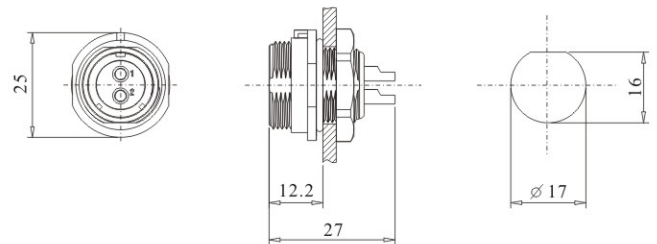
SP1712 / P—

SP1712 / S—

Front mount

Mate with SP1710

• Panel cutout



Contact arrangement and spec

Number of contact	2	3	4	5	7	9
Male contact face view						
Rated current (A)	10A	10A	5A	5A	5A	5A
Contact diameter	∅ 1.5X2	∅ 1.5X3	∅ 1X4	∅ 1X5	∅ 1X7	∅ 1X9
Rated voltage (AC.V)	500V	500V	500V	500V	400V	400V
Test voltage(AC.V) 1 min	1500V	1500V	1500V	1500V	1200V	1200V
Contact resistance mΩ	2.5	2.5	5	5	5	5
Wire size mm ² /AWG	≤ 2/14	≤ 2/14	≤ 0.785/18	≤ 0.785/18	≤ 0.785/18	≤ 0.785/18